

# SHARK BELTS



# FLUTE





NAME: \_\_\_\_\_ INSTRUMENT: \_\_\_\_\_

# WOODWIND SHARK BELTS: 6TH

✓	WHITE BELT
	Pitch Identification Challenge: 95% or above
	Note/Rest Identification: 90% or above
	Note/Rest Duration: 90% or above
	8-Beat Sustained Tone on Mouthpiece @ 80bpm
	Clap & Count and Diagram: 1G or 1H

✓	YELLOW BELT
	Concert B-flat Scale: Lines 1
	Chromatic Scale: Yellow Belt
	EE#: 18
	Clap & Count and Diagram: 2A or 2E

✓	ORANGE BELT
	Concert B-flat Scale: Lines 2
	Chromatic Scale: Orange Belt
	Octave/Register Slurs
	EE#: 23
	Clap & Count and Diagram: 3C or 3D

✓	GREEN BELT
	Concert A-flat Scale: Lines 1 & 2
	Concert B-flat Scale: Line 4
	Chromatic Scale: Green Belt
	EE#: 36
	Clap & Count and Diagram: 4E or 4F

✓	PURPLE BELT
	Concert F Scale: Lines 1 & 2
	Concert A-flat Scale: Line 4
	Chromatic Scale: Purple Belt
	Lip Flexibility: Line 1, meas. 1-6
	Flow Studies: Line 1
	EE#: 48
	Sight Reading: Performing on Instrument

✓	BLUE BELT
	Concert E-flat Scale: Lines 1 & 2
	Concert F Scale: Line 4
	Chromatic Scale: Blue Belt
	Flow Studies: Line 2
	Rhythm Exercises: Set 1 - B-flat (line 2)
	EE#: 106
	Sight Reading: Performing on Instrument

✓	RED BELT
	Concert E-flat Scale: Line 4
	Chromatic Scale: Red Belt
	Lip Flexibility: Line 1, meas. 7-End
	Flow Studies: Line 3
	Rhythm Exercises: Set 2 - B-flat (line 2)
	EE#: 170
	Sight Reading: Performing on Instrument

✓	BLACK BELT
	Chromatic Scale: Black Belt
	Selected Etude
	Sight Reading: Performing on Instrument
	Audition Etude #1

# Flute Fingering Chart

The chart displays fingering diagrams for various notes on a flute. Each note is shown on a treble clef staff with its key signature and fingering diagram below. Notes are arranged in four rows of five notes each. Notes with a † symbol indicate alternate fingerings.

Row 1: G, G $\flat$ /F $\sharp$ , F, E, E $\flat$ /D $\sharp$

Row 2: D, D $\flat$ /C $\sharp$ , C, B, B $\flat$ /A $\sharp$

Row 3: A, A $\flat$ /G $\sharp$ , G, G $\flat$ /F $\sharp$ , F

Row 4: E, E $\flat$ /D $\sharp$ , D, D $\flat$ /C $\sharp$ , C

Annotations: "B $\flat$  key needed for this note" points to the G $\flat$  fingering. "†Alt" points to alternate fingerings for G, F, E, B, and C. "Thumb Key" labels point to the B $\flat$  and B $\sharp$  fingerings. "\*Low Octave" labels are under the D notes.

† These alternate fingerings may work better on some flutes

‡ Only use this alternate fingering when changing between B $\flat$  and B $\sharp$

**Enharmonics:**

D $\flat$	E $\flat$	G $\flat$	A $\flat$	B $\flat$
C $\sharp$	D $\sharp$	F $\sharp$	G $\sharp$	A $\sharp$
C	D	F	G	A

Correlates with  
**NINGENIUS MUSIC**  
**STEPWISE FLASHCARDS**  
 © [stepwisepublications.com](http://stepwisepublications.com)

Every note that requires a thumb key may be played using either key (except the B's & high F $\sharp$ ). Use the B $\flat$  key on all notes when there are no flats in the key signature.

Flute  
Oboe  
Mallets

# Chromatic Scale

## Beginner Shark Belts

### Yellow Belt

Musical notation for the Yellow Belt chromatic scale. It consists of two phrases, each with a slur and a breath mark. The first phrase starts on G4 and goes up to B4 (G, G#, A, A#, B). The second phrase starts on B4 and goes down to G4 (B, Bb, A, A#, G). The key signature has one flat (Bb).

### Orange Belt

Musical notation for the Orange Belt chromatic scale. It consists of two phrases, each with a slur and a breath mark. The first phrase starts on F4 and goes up to A4 (F, F#, G, G#, A). The second phrase starts on A4 and goes down to F4 (A, Ab, G, G#, F). The key signature has two flats (Bb, Eb).

### Green Belt

Musical notation for the Green Belt chromatic scale. It consists of two phrases, each with a slur and a breath mark. The first phrase starts on E4 and goes up to G4 (E, E#, F, F#, G). The second phrase starts on G4 and goes down to E4 (G, Gb, F, F#, E). The key signature has three flats (Bb, Eb, Ab).

### Purple Belt

Musical notation for the Purple Belt chromatic scale. It consists of two phrases, each with a slur and a breath mark. The first phrase starts on D4 and goes up to F4 (D, D#, E, E#, F). The second phrase starts on F4 and goes down to D4 (F, Fb, E, E#, D). The key signature has four flats (Bb, Eb, Ab, Db).

### Blue Belt

Musical notation for the Blue Belt chromatic scale. It consists of two phrases, each with a slur and a breath mark. The first phrase starts on C4 and goes up to E4 (C, C#, D, D#, E). The second phrase starts on E4 and goes down to C4 (E, Eb, D, D#, C). The key signature has five flats (Bb, Eb, Ab, Db, Gb).

### Red Belt

Musical notation for the Red Belt chromatic scale. It consists of two phrases, each with a slur and a breath mark. The first phrase starts on B3 and goes up to D4 (B, B#, C, C#, D). The second phrase starts on D4 and goes down to B3 (D, Db, C, C#, B). The key signature has six flats (Bb, Eb, Ab, Db, Gb, Cb).

### Black Belt

Musical notation for the Black Belt chromatic scale. It consists of two phrases, each with a slur and a breath mark. The first phrase starts on A3 and goes up to C4 (A, A#, B, B#, C). The second phrase starts on C4 and goes down to A3 (C, Cb, B, B#, A). The key signature has seven flats (Bb, Eb, Ab, Db, Gb, Cb, Fb).

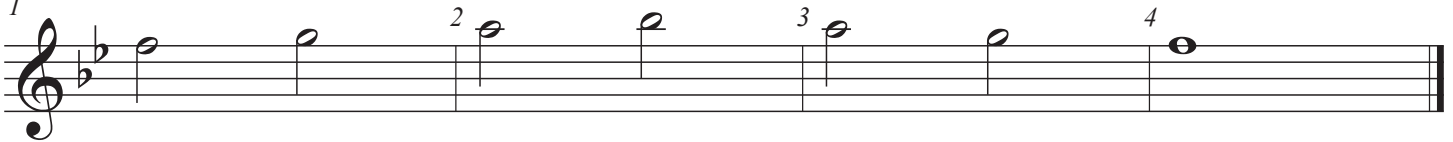
Flute  
Oboe  
Mallets

# Concert B $\flat$ Scale Study

1



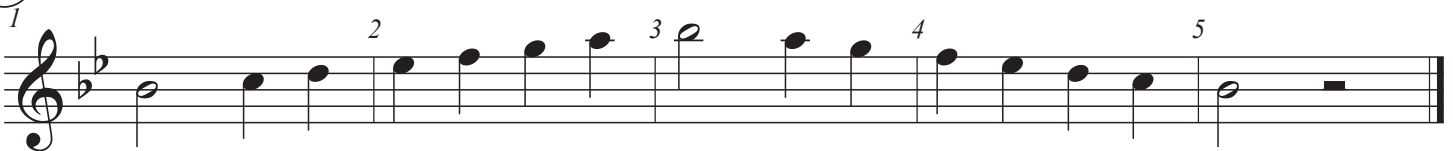
2



3



4 Scale Pattern



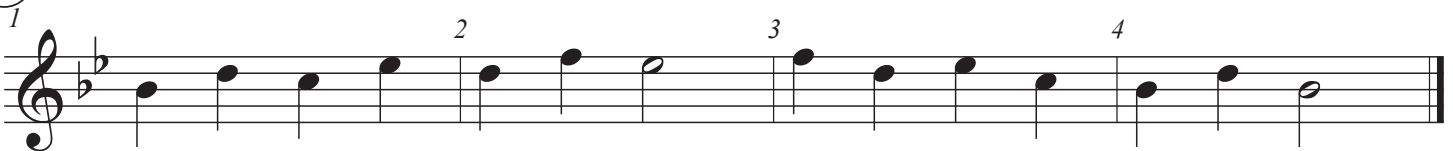
5 Scale Twister A



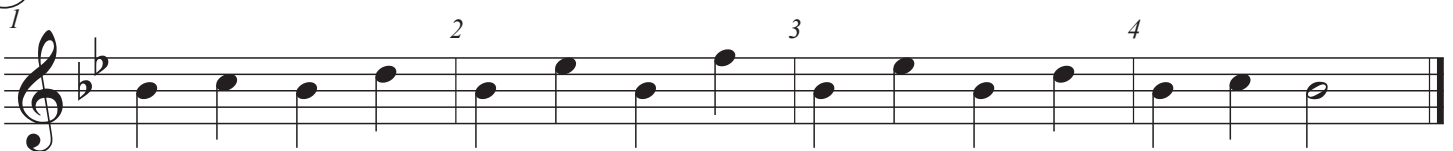
6 Scale Twister B



7 Mini Thirds



8 Mini Intervals



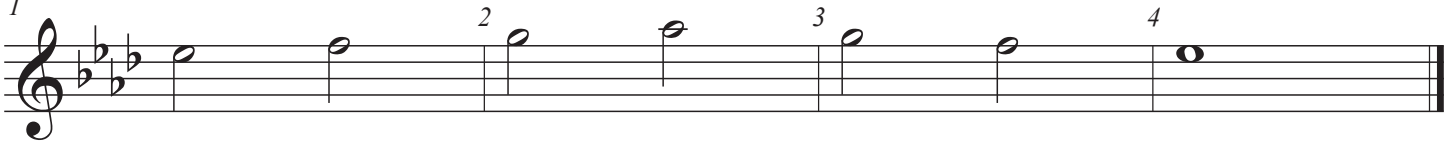
Flute  
Oboe  
Mallets

# Concert A $\flat$ Scale Study

①  
1



②  
1

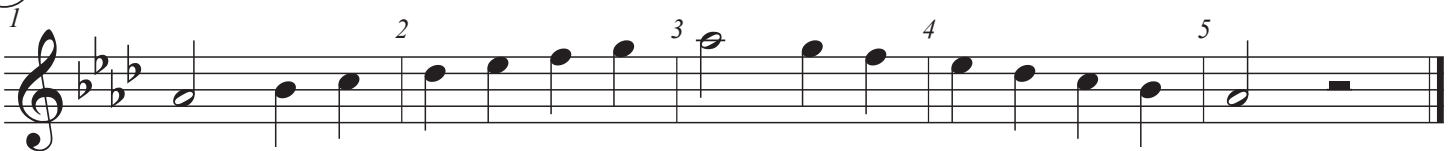


③  
1



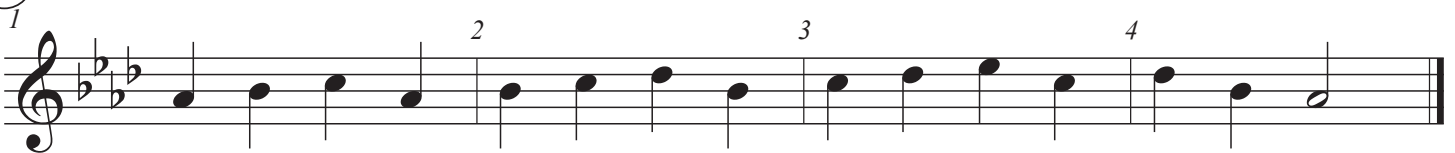
④

Scale Pattern



⑤

Scale Twister A



⑥

Scale Twister B



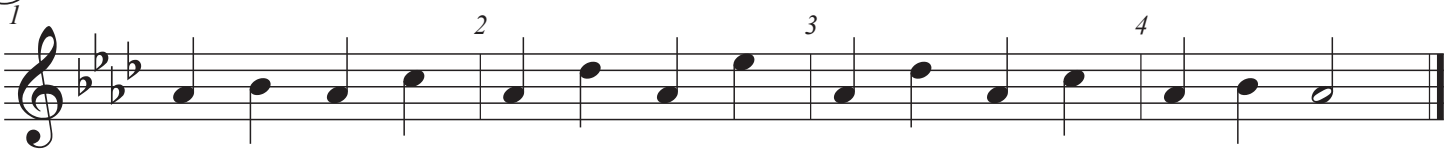
⑦

Mini Thirds



⑧

Mini Intervals



Flute  
Oboe  
Mallets

# Concert F Scale Study

1

1 2 3 4

Staff 1: Concert F scale, first four notes (F, G, A, Bb) in 4/4 time. Fingerings 1, 2, 3, 4 are indicated above the notes.

2

1 2 3 4

Staff 2: Concert F scale, last four notes (Bb, A, G, F) in 4/4 time. Fingerings 1, 2, 3, 4 are indicated above the notes.

3

1 2 3 4 5 6 7 8

Staff 3: Concert F scale, eighth notes (F, G, A, Bb, A, G, F, E, D, C, Bb, A, G, F) in 4/4 time. Fingerings 1 through 8 are indicated above the notes.

4 Scale Pattern

1 2 3 4 5

Staff 4: Scale Pattern, eighth notes (F, G, A, Bb, A, G, F, E, D, C, Bb, A, G, F) in 4/4 time. Fingerings 1 through 5 are indicated above the notes.

5 Scale Twister A

1 2 3 4

Staff 5: Scale Twister A, eighth notes (F, G, A, Bb, A, G, F, E, D, C, Bb, A, G, F) in 4/4 time. Fingerings 1 through 4 are indicated above the notes.

6 Scale Twister B

1 2 3 4

Staff 6: Scale Twister B, eighth notes (F, G, A, Bb, A, G, F, E, D, C, Bb, A, G, F) in 4/4 time. Fingerings 1 through 4 are indicated above the notes.

7 Mini Thirds

1 2 3 4

Staff 7: Mini Thirds, eighth notes (F, G, A, Bb, A, G, F, E, D, C, Bb, A, G, F) in 4/4 time. Fingerings 1 through 4 are indicated above the notes.

8 Mini Intervals

1 2 3 4

Staff 8: Mini Intervals, eighth notes (F, G, A, Bb, A, G, F, E, D, C, Bb, A, G, F) in 4/4 time. Fingerings 1 through 4 are indicated above the notes.

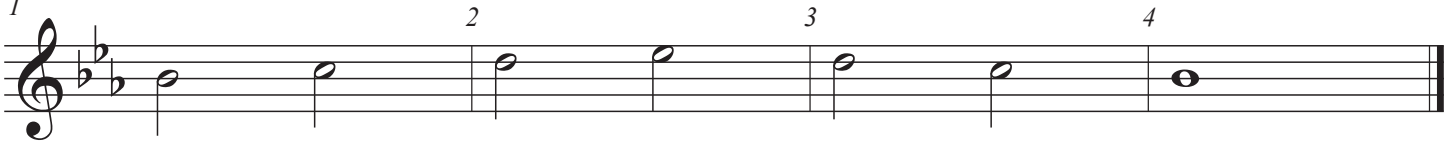
Flute  
Oboe  
Mallets

# Concert E $\flat$ Scale Study

①  
1



②  
1



③  
1



④ Scale Pattern



⑤ Scale Twister A



⑥ Scale Twister B



⑦ Mini Thirds



⑧ Mini Intervals





# Flow Studies

Flute

Vincent Cichowicz

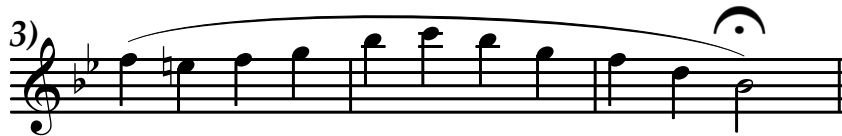
1)



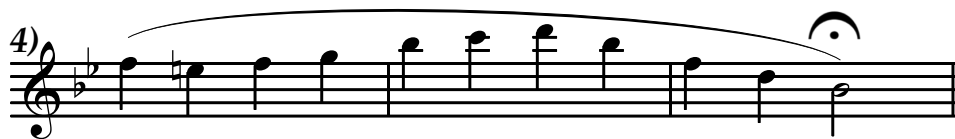
2)



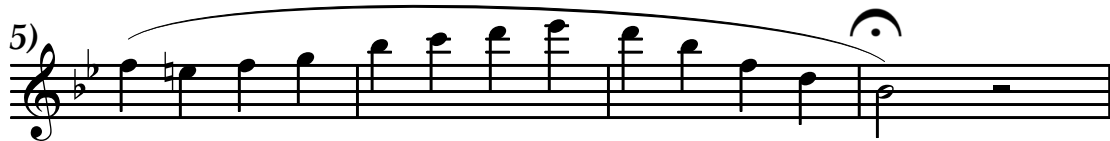
3)



4)



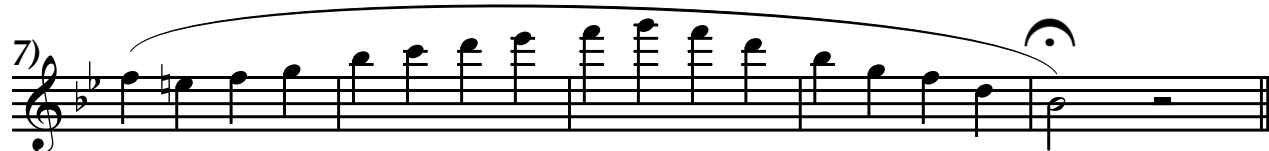
5)



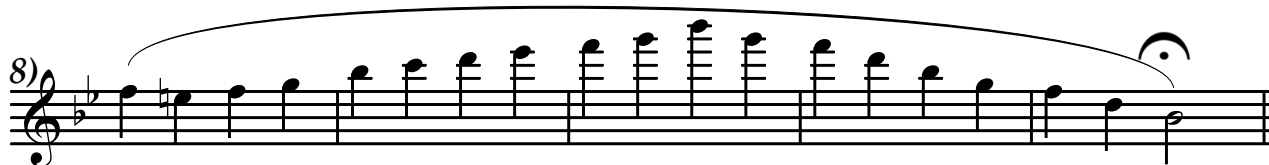
6)



7)



8)





Flute  
Oboe  
Mallets

# Rhythm Exercises

## SET 1

Set 1 consists of five measures in 4/4 time, featuring eighth-note patterns in both staves. The first four measures are marked with numbers 1, 2, 3, and 4 above the first staff, indicating the start of each measure. The fifth measure is marked with a 5 above the first staff. The key signature has two flats (Bb and Eb).

## SET 2

Set 2 consists of five measures in 4/4 time, featuring eighth-note patterns in both staves. The first four measures are marked with numbers 1, 2, 3, and 4 above the first staff, indicating the start of each measure. The fifth measure is marked with a 5 above the first staff. The key signature has two flats (Bb and Eb).

## SET 3

Set 3 consists of five measures in 4/4 time, featuring dotted eighth-note patterns in both staves. The first four measures are marked with numbers 1, 2, 3, and 4 above the first staff, indicating the start of each measure. The fifth measure is marked with a 5 above the first staff. The key signature has two flats (Bb and Eb).

## SET 4

Set 4 consists of five measures in 4/4 time, featuring dotted eighth-note patterns in both staves. The first four measures are marked with numbers 1, 2, 3, and 4 above the first staff, indicating the start of each measure. The fifth measure is marked with a 5 above the first staff. The key signature has two flats (Bb and Eb).

## SET 5

SET 5

B $\flat$  1

E $\flat$  2

1 2 3 4 5

## SET 6

SET 6

B $\flat$  1

E $\flat$  2

1 2 3 4 5

## SET 7

SET 7

B $\flat$  1

E $\flat$  2

1 2 3 4 5

## SET 8

SET 8

B $\flat$  1

E $\flat$  2

1 2 3 4 5

# Flute Series

D Series      E $\flat$  Series



The first row of musical notation shows two series. The D Series is on the left, starting with a quarter note D4, followed by quarter notes D5, E5, and F5, all under a slur. The Eb Series is on the right, starting with a quarter note Eb4, followed by quarter notes Eb5, F5, and G5, all under a slur. Both series end with a repeat sign and a whole note on the same pitch as the first note.

E Series      F Series



The second row shows the E Series and F Series. The E Series starts with a quarter note E4, followed by quarter notes E5, F5, and G5, all under a slur. The F Series starts with a quarter note F4, followed by quarter notes F5, G5, and A5, all under a slur. Both series end with a repeat sign and a whole note on the same pitch as the first note.

F $\sharp$  Series      G Series



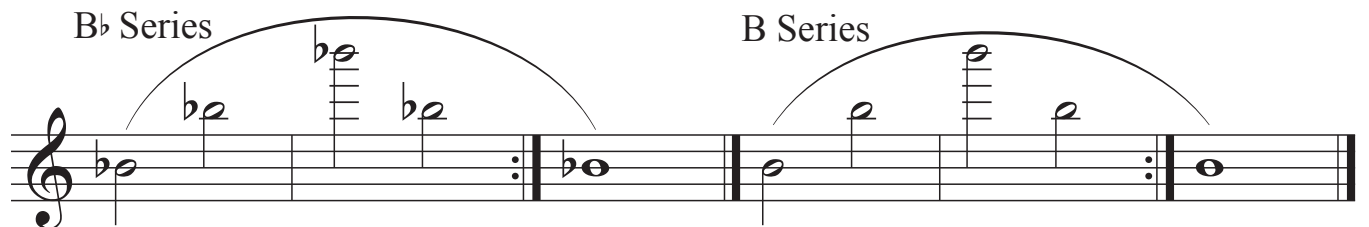
The third row shows the F# Series and G Series. The F# Series starts with a quarter note F#4, followed by quarter notes F#5, G5, and A5, all under a slur. The G Series starts with a quarter note G4, followed by quarter notes G5, A5, and B5, all under a slur. Both series end with a repeat sign and a whole note on the same pitch as the first note.

A $\flat$  Series      A Series



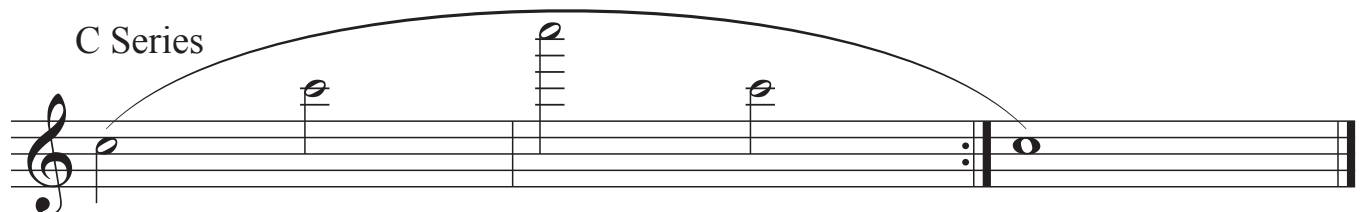
The fourth row shows the Ab Series and A Series. The Ab Series starts with a quarter note Ab4, followed by quarter notes Ab5, Bb5, and C6, all under a slur. The A Series starts with a quarter note A4, followed by quarter notes A5, B5, and C6, all under a slur. Both series end with a repeat sign and a whole note on the same pitch as the first note.

B $\flat$  Series      B Series



The fifth row shows the Bb Series and B Series. The Bb Series starts with a quarter note Bb4, followed by quarter notes Bb5, C6, and D6, all under a slur. The B Series starts with a quarter note B4, followed by quarter notes B5, C6, and D6, all under a slur. Both series end with a repeat sign and a whole note on the same pitch as the first note.

C Series



The sixth row shows the C Series. It starts with a quarter note C4, followed by quarter notes C5, D6, and E6, all under a slur. It ends with a repeat sign and a whole note on the same pitch as the first note.