

DAILY DRILLS



MALLETS



TABLE OF CONTENTS

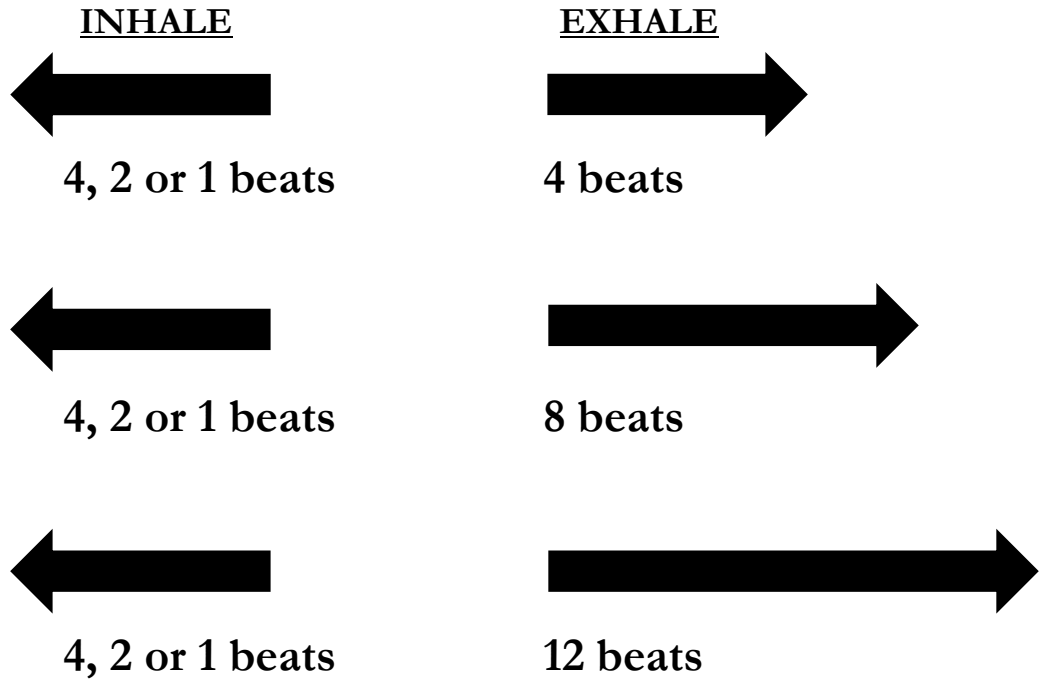


- FINGERING CHART
- BREATHING EXERCISES
- INSTRUMENTAL TUNING
- LONG TONES
- FLOW STUDIES
- LIP FLEXIBILITY
- CHROMATIC SCALE
- RHYTHM EXERCISES
- ARTICULATION EXERCISES
- BENZER ARTICULATION SERIES
- DYNAMICS
- RHYTHM DIAGRAMMING
- NOTE & REST VALUES
- FINGERING CHART

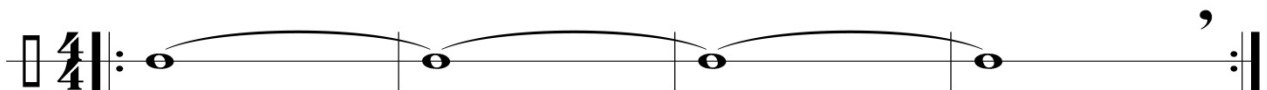
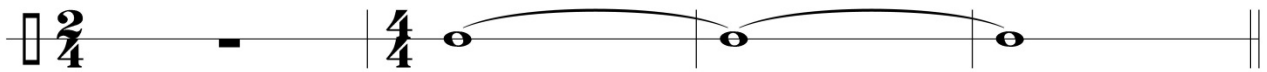
Breathing Exercises

1. Sit tall

2. Arm extended – arm movement is a visual for the air flowing into and out of your body.



Sustain



Instrumental Tuning

FLUTE/OBOE

SAXES

TRUMPET/EUPHONIUM T.C.

TROMBONE/EUPHONIUM/BASSOON

Concert F Around the Room:

- Group 1 - ALL
- Group 2 - Tuba, Contra Alto Cl., Bass Cl. and Bari Sax
- Group 3 - Trombone, Euphonium, Tenor Sax, Bassoon
- Group 4 - Trumpet
- Group 5 - Alto Sax, Horn
- Group 6 - Clarinet
- Group 7 - Flute and Oboe
- Group 8 - Percussion
- Group 9 - ALL

WINDS

PERCUSSION

Oboe
Flute
Mallets

Long Tone Exercises

Sustained

1 2 3 4 5 6 7 8

9 10 11 12 13 14 15 16 17

18 19 20 21 22 23 24

The Sustained section consists of three staves of music in 4/4 time. Each staff contains eight measures. Measures 1, 2, 4, 5, 7, and 8 feature sustained notes (half notes) with slurs. Measures 3, 6, and 15 are rests. Measures 10, 11, 13, 14, 16, and 17 feature sustained notes with slurs. Measures 9, 12, 15, and 18 are rests. The key signature has one flat (Bb).

Descending

1 2 3 4 5 6 7 8

9 10 11 12 13 14

The Descending section consists of two staves of music in 4/4 time. Each staff contains eight measures. Measures 1, 2, 4, 5, 7, and 8 feature descending eighth-note pairs. Measures 3, 6, and 13 are rests. Measures 10, 11, 12, and 14 feature descending eighth-note pairs. Measures 9 and 14 are rests. The key signature has one flat (Bb).

Ascending

1 2 3 4 5 6 7 8

9 10 11 12 13 14

The Ascending section consists of two staves of music in 4/4 time. Each staff contains eight measures. Measures 1, 2, 4, 5, 7, and 8 feature ascending eighth-note pairs. Measures 3, 6, and 13 are rests. Measures 10, 11, 12, and 14 feature ascending eighth-note pairs. Measures 9 and 14 are rests. The key signature has one flat (Bb).

C Instruments Long Tone Exercises

♩ = 80

1 Extension 2 3 4 5 6

7 8 9 10 11 12

13 14 15 16 17 18

19 20 21 22 23 24

25 26 27 28 29 30

31 32 33 34 35 36

37 38 39 40 41 42

43 44 45 46 47 48

Detailed description: This musical score consists of eight staves of music, each containing six measures. The music is written in treble clef with a common time signature (C). The tempo is indicated as quarter note = 80. The exercises are numbered 1 through 48. Measure 1 is labeled 'Extension'. The notes are: 1 (C4), 2 (C4), 3 (D4), 4 (E4), 5 (F4), 6 (F4), 7 (G4), 8 (G4), 9 (A4), 10 (A4), 11 (B4), 12 (B4), 13 (C5), 14 (C5), 15 (D5), 16 (D5), 17 (E5), 18 (E5), 19 (F5), 20 (F5), 21 (G5), 22 (G5), 23 (A5), 24 (A5), 25 (B5), 26 (B5), 27 (C6), 28 (C6), 29 (D6), 30 (D6), 31 (E6), 32 (E6), 33 (F6), 34 (F6), 35 (G6), 36 (G6), 37 (A6), 38 (A6), 39 (B6), 40 (B6), 41 (C7), 42 (C7), 43 (D7), 44 (D7), 45 (E7), 46 (E7), 47 (F7), 48 (F7). Each measure contains a single note, and the notes are repeated in pairs (e.g., two C4 notes in measure 1). The notes are marked with a flat (b) for B4, B5, and B6. The score ends with a double bar line at the end of measure 48.

Flow Studies

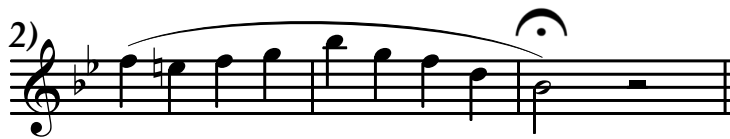
Oboe / Mallets

Vincent Cichowicz

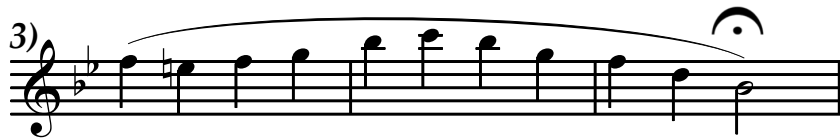
1)



2)



3)



4)



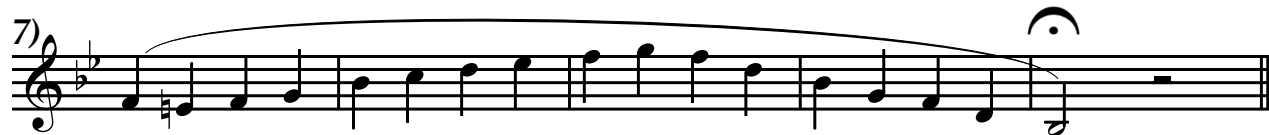
5)



6)



7)



8)



Mallets

Chromatic Scale

A ♩ = 80

1 2 3 4 5 6

7 8 9 10 11 12

B

1 2 3 4 5 6

7 8 9 10 11 12

C

1 2 3 4 5 6

7 8 9 10 11 12

13 14 15 16 17 18

19 20 21 22 23 24

D

1 2 3 4

SPACER

PAGE

Reminders:

Pencil on your stand

Sit tall while playing

Your feet are flat on the floor

Your stand is adjusted properly



www.shotwellsharkband.com

Flute
Oboe
Mallets

Rhythm Exercises

SET 1

Set 1 consists of five measures in 4/4 time, featuring eighth-note patterns in both staves. The key signature has two flats (Bb and Eb). Measure 1 is marked with a '1' above the staff. Measures 2, 3, and 4 are marked with '2', '3', and '4' respectively. Measure 5 ends with a whole note chord. The notation is as follows:

Measure	Bb 1	Eb 2
1	G4, A4, Bb4, C5, Bb4, A4, G4	G3, A3, Bb3, C4, Bb3, A3, G3
2	A4, Bb4, C5, Bb4, A4, G4, F4	A3, Bb3, C4, Bb3, A3, G3, F3
3	F4, G4, A4, Bb4, C5, Bb4, A4	F3, G3, A3, Bb3, C4, Bb3, A3
4	G4, A4, Bb4, C5, Bb4, A4, G4	G3, A3, Bb3, C4, Bb3, A3, G3
5	G4, A4, Bb4, C5, Bb4, A4, G4	G3, A3, Bb3, C4, Bb3, A3, G3

SET 2

Set 2 consists of five measures in 4/4 time, featuring eighth-note patterns in both staves. The key signature has two flats (Bb and Eb). Measure 1 is marked with a '1' above the staff. Measures 2, 3, and 4 are marked with '2', '3', and '4' respectively. Measure 5 ends with a whole note chord. The notation is as follows:

Measure	Bb 1	Eb 2
1	G4, A4, Bb4, C5, Bb4, A4, G4	G3, A3, Bb3, C4, Bb3, A3, G3
2	A4, Bb4, C5, Bb4, A4, G4, F4	A3, Bb3, C4, Bb3, A3, G3, F3
3	F4, G4, A4, Bb4, C5, Bb4, A4	F3, G3, A3, Bb3, C4, Bb3, A3
4	G4, A4, Bb4, C5, Bb4, A4, G4	G3, A3, Bb3, C4, Bb3, A3, G3
5	G4, A4, Bb4, C5, Bb4, A4, G4	G3, A3, Bb3, C4, Bb3, A3, G3

SET 3

Set 3 consists of five measures in 4/4 time, featuring dotted eighth-note patterns in both staves. The key signature has two flats (Bb and Eb). Measure 1 is marked with a '1' above the staff. Measures 2, 3, and 4 are marked with '2', '3', and '4' respectively. Measure 5 ends with a whole note chord. The notation is as follows:

Measure	Bb 1	Eb 2
1	G4, A4, Bb4, C5, Bb4, A4, G4	G3, A3, Bb3, C4, Bb3, A3, G3
2	A4, Bb4, C5, Bb4, A4, G4, F4	A3, Bb3, C4, Bb3, A3, G3, F3
3	F4, G4, A4, Bb4, C5, Bb4, A4	F3, G3, A3, Bb3, C4, Bb3, A3
4	G4, A4, Bb4, C5, Bb4, A4, G4	G3, A3, Bb3, C4, Bb3, A3, G3
5	G4, A4, Bb4, C5, Bb4, A4, G4	G3, A3, Bb3, C4, Bb3, A3, G3

SET 4

Set 4 consists of five measures in 4/4 time, featuring dotted eighth-note patterns in both staves. The key signature has two flats (Bb and Eb). Measure 1 is marked with a '1' above the staff. Measures 2, 3, and 4 are marked with '2', '3', and '4' respectively. Measure 5 ends with a whole note chord. The notation is as follows:

Measure	Bb 1	Eb 2
1	G4, A4, Bb4, C5, Bb4, A4, G4	G3, A3, Bb3, C4, Bb3, A3, G3
2	A4, Bb4, C5, Bb4, A4, G4, F4	A3, Bb3, C4, Bb3, A3, G3, F3
3	F4, G4, A4, Bb4, C5, Bb4, A4	F3, G3, A3, Bb3, C4, Bb3, A3
4	G4, A4, Bb4, C5, Bb4, A4, G4	G3, A3, Bb3, C4, Bb3, A3, G3
5	G4, A4, Bb4, C5, Bb4, A4, G4	G3, A3, Bb3, C4, Bb3, A3, G3

SET 5

SET 5

B \flat 1

E \flat 2

1 2 3 4 5

SET 6

SET 6

B \flat 1

E \flat 2

1 2 3 4 5

SET 7

SET 7

B \flat 1

E \flat 2

1 2 3 4 5

SET 8

SET 8

B \flat 1

E \flat 2

1 2 3 4 5

Articulation Exercises

Tenuto - Full valued and connected

Use the "Doh" syllable

Musical notation for Tenuto exercise in 4/4 time. The first measure contains a whole note 'D' with a bar line. The second measure contains quarter notes 'D', 'O', 'H', 'D' with bar lines. The third measure is a whole rest. The fourth measure contains a whole note 'D'. The fifth measure contains eighth notes 'D', 'O', 'H', 'D', 'D', 'O', 'H', 'D' with bar lines. The sixth measure is a whole rest. The seventh measure contains a whole note 'D'. Below the staff is a rhythmic diagram with five boxes: a long box for the first measure, and four shorter boxes for the next four measures.

Staccato - Separated; basically cut the note value in half

Use the "Dih" syllable

Musical notation for Staccato exercise in 4/4 time. The first measure contains a whole note 'D'. The second measure contains quarter notes 'D', 'I', 'H', 'D' with bar lines. The third measure is a whole rest. The fourth measure contains a whole note 'D'. The fifth measure contains eighth notes 'D', 'I', 'H', 'D', 'D', 'I', 'H', 'D' with bar lines. The sixth measure is a whole rest. The seventh measure contains a whole note 'D'. Below the staff is a rhythmic diagram with five boxes: a long box for the first measure, and four shorter boxes for the next four measures.

Accent - Full valued and emphasized

Use the "Dah" syllable

Musical notation for Accent exercise in 4/4 time. The first measure contains a whole note 'D' with an accent (>). The second measure contains quarter notes 'D', 'A', 'H', 'D' with accents and bar lines. The third measure is a whole rest. The fourth measure contains a whole note 'D'. The fifth measure contains eighth notes 'D', 'A', 'H', 'D', 'D', 'A', 'H', 'D' with accents and bar lines. The sixth measure is a whole rest. The seventh measure contains a whole note 'D'. Below the staff is a rhythmic diagram with five boxes: a long box for the first measure, and four shorter boxes for the next four measures.

Marcato (Housetop Accent) - Strong and emphasized with separation

Use the "Dee" syllable

Musical notation for Marcato exercise in 4/4 time. The first measure contains a whole note 'D' with a house-top accent (^). The second measure contains quarter notes 'D', 'E', 'E', 'D' with house-top accents and bar lines. The third measure is a whole rest. The fourth measure contains a whole note 'D'. The fifth measure contains eighth notes 'D', 'E', 'E', 'D', 'D', 'E', 'E', 'D' with house-top accents and bar lines. The sixth measure is a whole rest. The seventh measure contains a whole note 'D'. Below the staff is a rhythmic diagram with five boxes: a long box for the first measure, and four shorter boxes for the next four measures.

Benzer Articulation Series

1 Tenuto ("Doh")

2 3 4 5 6 7 8

9 10 11 12 13 14 15 16

17 Staccato ("Dih")

18 19 20 21 22 23 24

25 26 27 28 29 30 31 32

33 34 35 36 37 38

39 40 41 42 43 44

45 46 47 48 49 50

51 52 53 54 55 56

Benzer Articulation Series

58 59 60 61 62

63 64 65 66 67 68

69 70 71 72 73 74

75 76 77 78 79 80

81 82 83 84

85 86 87 88

89 90 91 92

93 94 95 96 97

Dynamics

9

mf (medium full) *f* (full sound) *mf* *mp* (medium soft)

17

f *p* (soft) *f* *p*

25

mp *f* *mf* *p*

33

mf *p* *mf* *f* *ff* *pp* *mp* *f*

45

f *p* *p* <-> *f* *p* <-> *f* *f* >-> *p* *f* >-> *p*

51

p <-> *f* >-> *p* *p* <-> *f* >-> *p*

f >-> *p* <-> *f* *f* >-> *p* <-> *f*

Rhythm Diagramming:

A VISUAL Representation of Rhythms

- ABOVE each note/rest, draw the appropriate number of pulses:

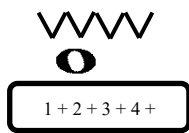
\ = downbeat (½ a beat)

/ = upbeat (½ a beat)

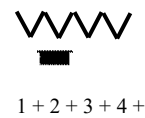
∨ = full beat (1 beat)

- BELOW each note/rest, write out the number of beats that symbol receives STARTING on its designated beat. ONLY the subdivisions for NOTES will be CIRCLED. "Circle SOUND not SILENCE."

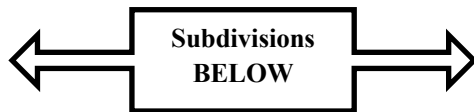
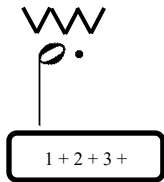
Whole Note (4 beats of SOUND)



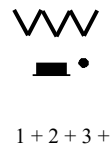
Whole Rest (4 beats of SILENCE)



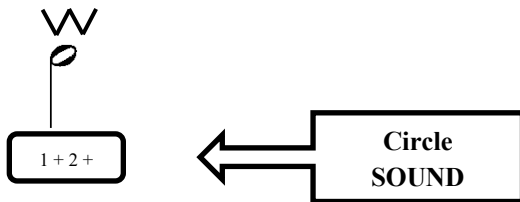
Dotted Half Note (3 beats of SOUND)



Dotted Half Rest (3 beats of SILENCE)



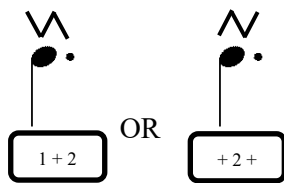
Half Note (2 beats of SOUND)



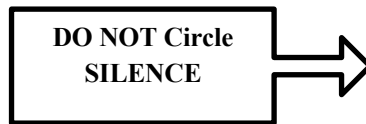
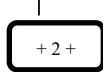
Half Note (2 beats of SILENCE)



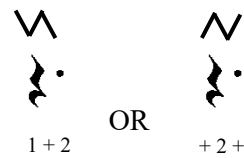
Dotted Quarter Note (1½ beats of SOUND)



OR



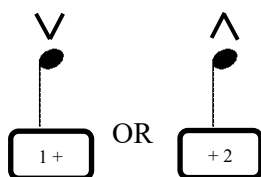
Dotted Quarter Note (1½ beats of SILENCE)



OR



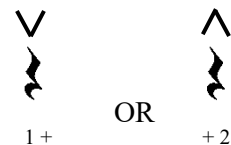
Quarter Note (1 beat of SOUND)



OR



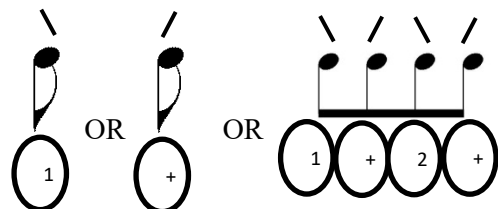
Quarter Rest (1 beat of SILENCE)



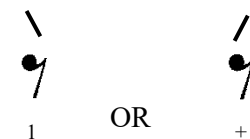
OR



Eighth Note (½ a beat of SOUND) Individual or Grouped



















Eighth Rest (½ a beat of SILENCE)



Note and Rest Values

Based in Common Time

-  **whole note** - receives 4 beats of sound
-  **whole rest** - receives 4 beats of silence
-  **dotted half note** - receives 3 beats of sound
-  **dotted half rest** - receives 3 beats of silence
-  **half note** - receives 2 beats of sound
-  **half rest** - receives 2 beats of silence
-  **dotted quarter note** - receives 1 1/2 beats of sound
-  **dotted quarter rest** - receives 1 1/2 beats of silence
-  **quarter note** - receives 1 beat of sound
-  **quarter rest** - receives 1 beat of silence
-  **dotted eighth note** - receives 3/4 beat of sound
-  **dotted eighth rest** - receives 3/4 beat of silence
-  **eighth note** - receives 1/2 beat of sound
-  **eighth rest** - receives 1/2 beat of silence
-  **sixteenth note** - receives 1/4 beat of sound
-  **sixteenth rest** - receives 1/4 beat of silence

